



*jordan fishwick*

32 Mossways Park, SK9 5PA  
Price £164,950





## Mossways Park Wilmslow SK9 5PA

Price £164,950



(Occupiers Over 50's ) Located within a beautiful rural setting whilst still enjoying close proximity to Wilmslow, take a look at this two double bedroom property which offers stylish and modernised accommodation. Set in the quiet location of Mobberley, popular towns in the surrounding areas include Knutsford, Wilmslow and Alderley Edge offering great local amenities and attractions in and around the area.

An attractive park home which internally comprises, a private and spacious entrance hallway. The kitchen offers multiple integrated appliances including dishwasher, fridge freezer and more. As well as enjoying the benefit of UPVC double glazing throughout. To the front aspect a spacious living/dining area comprises of multiple windows creating excellent natural light. Additionally the property offers two double bedrooms which have built in wardrobe/storage space, one bedroom provides a shower room/ en suite. There is also a modern three piece family bathroom suite, featuring heated towel rail and complementary splashback tiles. Externally, the home offers a good size low maintenance private plot including a shed for extra storage space.



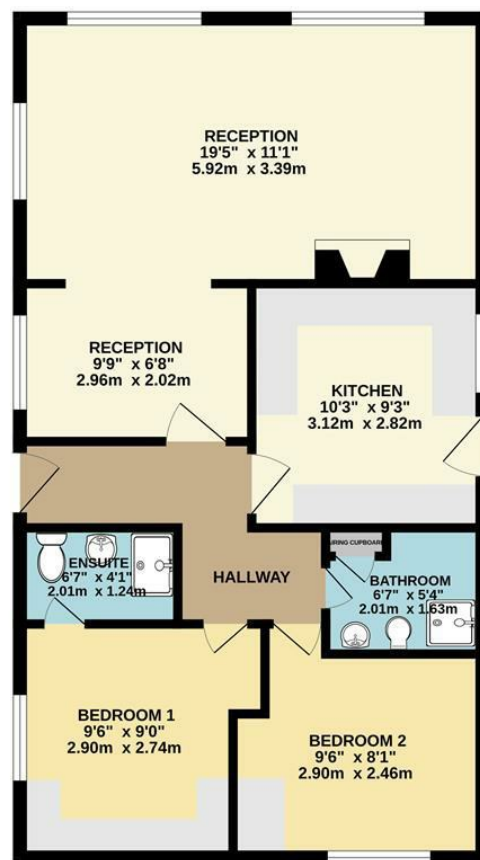




- Park Home
- No Chain
- Two bedrooms
- Ensuite
- Parking
- Large open plan Living Dining Space
- Over 50's



GROUND FLOOR  
676 sq.ft. (62.8 sq.m.) approx.



TOTAL FLOOR AREA : 676 sq.ft. (62.8 sq.m.) approx.  
Measurements are approximate. Not to scale. Illustrative purposes only  
Made with Metropix ©2025



These particulars are believed to be accurate but they are not guaranteed and do not form a contract. Neither Jordan Fishwick nor the vendor or lessor accept any responsibility in respect of these particulars, which are not intended to be statements or representations of fact and any intending purchaser or lessee must satisfy himself by inspection or otherwise as to the correctness of each of the statements contained in these particulars. Any floorplans on this brochure are for illustrative purposes only and are not necessarily to scale.

Offices at: Chorlton, Didsbury, Disley, Hale, Glossop, Macclesfield, Manchester Deansgate, Manchester Whitworth Street, New Mills, Sale, Wilmslow and Withington

36-38 Alderley Road, Wilmslow SK91JX  
**01625 532000**

wilmslow@jordanfishwick.co.uk  
www.jordanfishwick.co.uk